

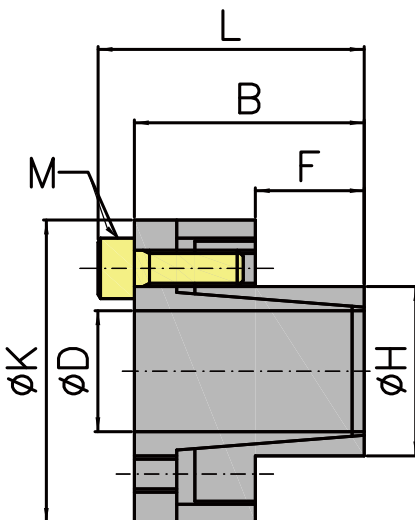
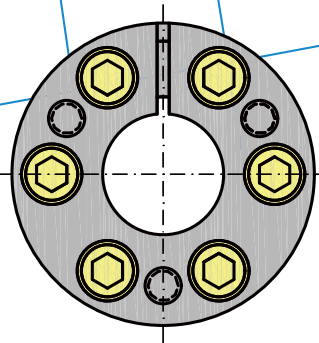
PH-B06

型號

PH-B 尺寸表

材質: S45C

單位: mm



規格 NO	D	H	K	F	B	L	M	扭矩 (N.m)	軸向荷重 (KN)	輪測面壓 (N/mm ²)	重量 (kg)
PH-B6	6	14	25	9	21	24	M3	14	4.8	86	0.08
PH-B8	8	15	27	12	25	29	M4	29	10	205	0.1
PH-B9	9	16	28	14	26	30	M4	44	10	185	0.12
PH-B10	10	16	28	14	26	30	M4	49	10	185	0.12
PH-B11	11	18	32	14	26	30	M4	53	10	185	0.14
PH-B12	12	18	32	14	26	30	M4	58	10	160	0.14
PH-B13	13	23	38	14	26	30	M4	63	10	140	0.14
PH-B14	14	23	38	14	26	30	M4	68	10	130	0.15
PH-B15	15	24	45	16	36	42	M6	127	17	185	0.25
PH-B16	16	24	45	16	36	42	M6	136	17	175	0.26
PH-B17	17	26	47	18	38	44	M6	180	22	190	0.27
PH-B18	18	26	47	18	38	44	M6	200	22	160	0.27
PH-B19	19	27	49	18	38	44	M6	220	22	160	0.3
PH-B20	20	28	49	18	38	44	M6	220	22	170	0.3
PH-B22	22	32	54	25	45	51	M6	250	22	120	0.38
PH-B24	24	34	56	25	45	51	M6	270	22	120	0.39
PH-B25	25	34	56	25	45	51	M6	280	22	120	0.4
PH-B28	28	39	61	25	45	51	M6	500	35	150	0.47
PH-B30	30	41	62	25	45	51	M6	530	35	150	0.48
PH-B32	32	43	64	30	50	56	M6	750	45	150	0.52
PH-B35	35	47	69	30	50	56	M6	850	48	140	0.63
PH-B38	38	50	72	30	50	56	M6	930	48	140	0.67
PH-B40	40	53	74	30	50	56	M6	980	48	130	0.74
PH-B42	42	55	78	40	65	73	M8	1000	48	130	0.78
PH-B45	45	59	84	40	65	73	M8	1900	84	130	1.23
PH-B48	48	62	87	45	70	78	M8	2000	84	130	1.24
PH-B50	50	65	92	45	70	78	M8	2700	110	140	1.4
PH-B55	55	71	98	50	75	83	M8	3000	110	130	1.7
PH-B60	60	77	104	50	75	83	M8	3300	110	130	1.9
PH-B65	65	84	111	50	75	83	M8	3600	110	130	2.2
PH-B70	70	90	119	60	91	101	M10	6200	180	130	3.05
PH-B75	75	95	126	60	91	101	M10	6600	180	130	3.32
PH-B80	80	100	131	65	96	106	M10	8700	220	130	3.5
PH-B85	85	106	137	65	96	106	M10	9200	220	130	3.81
PH-B90	90	112	143	65	96	106	M10	11000	240	130	4.2
PH-B95	95	120	153	65	96	106	M10	12000	240	130	4.75
PH-B100	100	125	162	65	102	114	M12	15000	250	130	4.88