

PH-D20  
PH-E20

型號



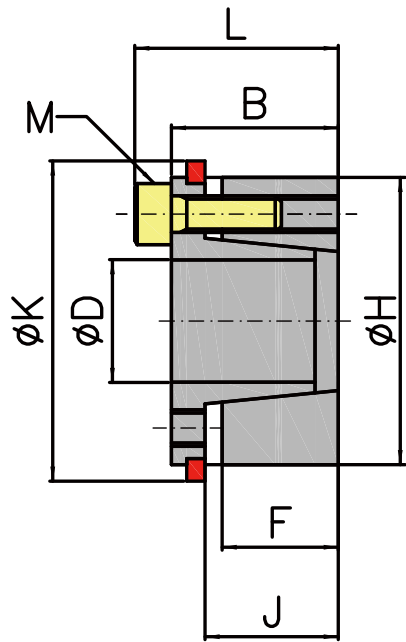
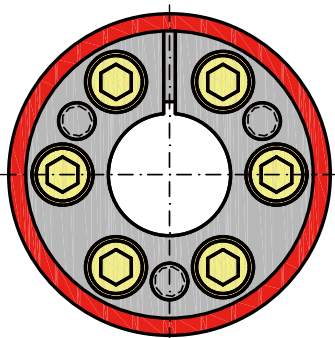
PH-D 尺寸表

材質: S45C

單位: mm

PH-E 尺寸表

規格 NO	D	H	F	J	B	L	M	常規 扭力 (N.m)	軸向 荷重 (KN)	輪測 面壓 (N/mm <sup>2</sup> )	重量 (kg)	規格 NO	K
PH-D20	20	47	26	31	42	48	M6	550	55	100	0.37	PH-E20	53
PH-D22	22	47	26	31	42	48	M6	600	55	100	0.37	PH-E22	53
PH-D24	24	50	26	31	42	48	M6	660	55	100	0.4	PH-E24	56
PH-D25	25	50	26	31	42	48	M6	680	55	100	0.4	PH-E25	56
PH-D28	28	55	26	31	42	48	M6	720	55	100	0.44	PH-E28	61
PH-D30	30	55	26	31	42	48	M6	820	55	100	0.5	PH-E30	61
PH-D32	32	60	26	31	42	48	M6	1400	80	130	0.52	PH-E32	66
PH-D35	35	60	26	31	42	48	M6	1400	80	130	0.53	PH-E35	66
PH-D38	38	65	26	31	42	48	M6	1600	80	130	0.58	PH-E38	71
PH-D40	40	65	26	31	42	48	M6	1600	110	130	0.6	PH-E40	71
PH-D42	42	75	30	36	50	58	M8	2500	110	130	0.97	PH-E42	81
PH-D45	45	75	30	36	50	58	M8	2500	150	130	1	PH-E45	81
PH-D48	48	80	30	36	50	58	M8	3700	150	170	1.05	PH-E48	86
PH-D50	50	80	30	36	50	58	M8	3700	150	170	1.08	PH-E50	86
PH-D55	55	85	30	36	50	58	M8	4100	150	160	1.14	PH-E55	91
PH-D60	60	90	30	36	50	58	M8	4500	160	160	1.18	PH-E60	96
PH-D65	65	95	30	36	50	58	M8	4500	160	150	1.26	PH-E65	101
PH-D70	70	110	39	46	60	70	M10	8400	240	150	2.25	PH-E70	119
PH-D75	75	115	39	46	60	70	M10	8400	240	140	2.43	PH-E75	124
PH-D80	80	120	39	46	60	70	M10	9600	250	140	2.6	PH-E80	129
PH-D85	85	125	39	46	60	70	M10	11000	250	150	2.7	PH-E85	134
PH-D90	90	130	39	46	60	70	M10	13000	300	150	2.8	PH-E90	139
PH-D95	95	135	39	46	60	70	M10	13000	300	150	3	PH-E95	144
PH-D100	100	145	46	52	68	80	M12	17500	350	150	4.1	PH-E100	155
PH-D110	110	155	46	52	68	80	M12	20000	300	150	4.4	PH-E110	165
PH-D120	120	165	46	52	68	80	M12	21300	330	150	4.8	PH-E120	175
PH-D130	130	180	46	52	68	80	M12	28000	350	150	5.7	PH-E130	188
PH-D140	140	190	51	58.5	76	90	M14	30400	350	150	6.2	PH-E140	199
PH-D150	150	200	51	58.5	76	90	M14	39000	400	160	7.1	PH-E150	209



備註: PH-D 附上 E 型環, 即為 PH-E, K 為 PH-E 用尺寸