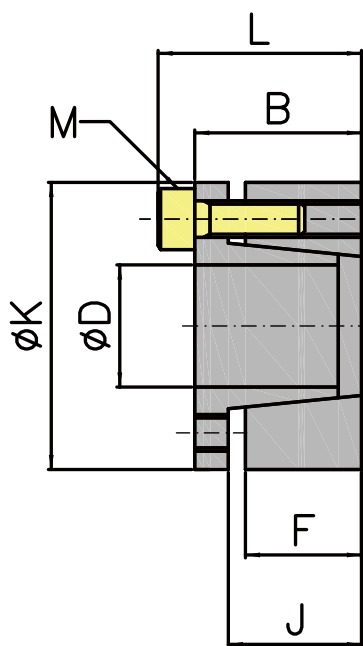
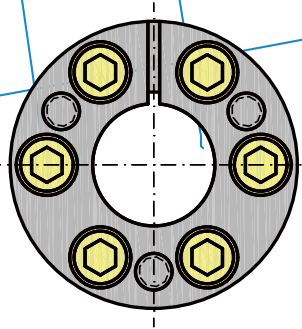


## PH-DS

型號



PH-DS尺寸表

材質: S45C

單位: m/m

規格 NO	D	K	F	J	B	L	M	常規 扭力 (N.m)	軸向 荷重 (KN)	輪測 面壓 (N/mm)	重量 (kg)
PH-DS6	6	19	8	10.5	13.5	16.5	M3	6.2	4	53	0.02
PH-DS8	8	22	10	13	17	21	M4	18	4.7	70	0.03
PH-DS9	9	23	10	13	17	21	M4	21	4.7	68	0.04
PH-DS10	10	24	10	13	17	21	M4	30	6.2	87	0.06
PH-DS11	11	25	10	13	17	21	M4	34	6.2	84	0.06
PH-DS12	12	26	10	13	17	21	M4	47	7.8	100	0.07
PH-DS13	13	27	10	13	17	21	M4	50	7.8	97	0.08
PH-DS14	14	31	12.5	16	21	26	M5	70	10	87	0.08
PH-DS15	15	32	12.5	16	21	26	M5	75	10	84	0.08
PH-DS16	16	33	12.5	16	21	26	M5	80	10	81	0.08
PH-DS17	17	34	12.5	16	21	26	M5	105	12.5	99	0.09
PH-DS18	18	35	12.5	16	21	26	M5	110	12.5	96	0.1
PH-DS19	19	47	17	22	28	34	M6	290	30	94	0.25
PH-DS20	20	47	17	22	28	34	M6	320	32	100	0.25
PH-DS22	22	47	17	22	28	34	M6	320	32	100	0.26
PH-DS24	24	50	17	22	28	34	M6	360	32	100	0.27
PH-DS25	25	50	17	22	28	34	M6	420	34	100	0.27
PH-DS28	28	55	17	22	28	34	M6	500	34	100	0.32
PH-DS30	30	55	17	22	28	34	M6	520	34	100	0.34
PH-DS32	32	60	17	22	28	34	M6	770	48	110	0.35
PH-DS35	35	60	17	22	28	34	M6	840	48	110	0.37
PH-DS38	38	65	17	22	28	34	M6	910	48	110	0.38
PH-DS40	40	65	17	22	28	34	M6	960	48	110	0.4
PH-DS42	42	75	20	25	33	41	M8	1000	65	110	0.63
PH-DS45	45	75	20	25	33	41	M8	1500	65	110	0.65
PH-DS48	48	80	20	25	33	41	M8	2000	85	140	0.68
PH-DS50	50	80	20	25	33	41	M8	2100	85	140	0.7
PH-DS55	55	85	20	25	33	41	M8	2500	95	140	0.73
PH-DS60	60	90	20	25	33	41	M8	2700	90	130	0.78
PH-DS65	65	95	20	25	33	41	M8	3200	100	140	0.83
PH-DS70	70	110	24	30	40	50	M10	4900	140	140	1.33
PH-DS75	75	115	24	30	40	50	M10	5300	140	130	1.4
PH-DS80	80	120	24	30	40	50	M10	5600	140	130	1.48
PH-DS85	85	125	24	30	40	50	M10	6700	160	130	1.55
PH-DS90	90	130	24	30	40	50	M10	7100	160	130	1.65
PH-DS95	95	135	24	30	40	50	M10	9100	195	135	1.7
PH-DS100	100	145	26	32	44	56	M12	10200	200	150	2.6
PH-DS110	110	155	26	32	44	56	M12	10600	200	150	2.8
PH-DS120	120	165	26	32	44	56	M12	13000	216	140	3
PH-DS130	130	180	34	40	54	64	M12	18900	290	135	4.6
PH-DS140	140	190	34	40	54	68	M14	20500	333	125	4.9
PH-DS150	150	200	34	40	54	68	M14	25000	362	120	5.2