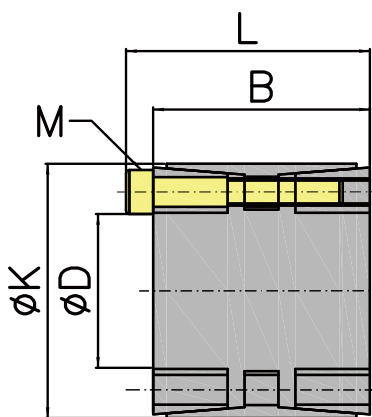
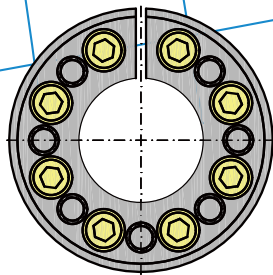


PH-F25

型號



PH-F 尺寸表

材質: S45C

單位: m/m

規格 NO	D	K	B	L	M	常規扭力 (N.m)	軸向荷重 (KN)	輪測面壓 (N/mm ²)	重量 (kg)
PH-F25	25	50	40	46	M6	900	70	90	0.42
PH-F28	28	55	40	46	M6	940	70	90	0.44
PH-F30	30	55	40	46	M6	1100	70	90	0.47
PH-F32	32	60	50	56	M6	1300	70	110	0.48
PH-F35	35	60	50	56	M6	1600	90	110	0.52
PH-F38	38	65	57	63	M6	2400	90	110	0.59
PH-F40	40	65	57	63	M6	2400	120	110	0.6
PH-F42	42	75	64	72	M8	3300	150	140	0.61
PH-F45	45	75	64	72	M8	3300	150	140	0.85
PH-F48	48	80	64	72	M8	4200	160	130	1.2
PH-F50	50	80	64	72	M8	4200	160	130	1.3
PH-F55	55	85	64	72	M8	4800	170	120	1.35
PH-F60	60	90	64	72	M8	6200	200	120	1.4
PH-F65	65	95	64	72	M8	6900	210	130	1.55
PH-F70	70	110	78	88	M10	11500	330	130	2.9
PH-F75	75	115	78	88	M10	12500	330	130	3.1
PH-F80	80	120	78	88	M10	14500	360	130	3.25
PH-F85	85	125	78	88	M10	15500	400	130	3.45
PH-F90	90	130	78	88	M10	18100	400	130	3.6
PH-F95	95	135	78	88	M10	19500	400	130	3.85
PH-F100	100	145	100	112	M12	26500	500	130	5.7
PH-F110	110	155	100	112	M12	31000	600	110	6.3
PH-F120	120	165	100	112	M12	40000	660	120	7
PH-F130	130	180	116	130	M14	53000	800	130	10
PH-F140	140	190	116	130	M14	64000	900	110	10
PH-F150	150	200	116	130	M14	74000	1000	110	11
PH-F160	160	210	116	130	M14	84000	1050	110	12
PH-F170	170	225	146	162	M16	108000	1300	120	18
PH-F180	180	235	146	162	M16	121000	1300	120	18
PH-F190	190	250	146	162	M16	133000	1400	130	23
PH-F200	200	260	146	162	M16	146000	1400	130	27